

MaxTrak™
Slotted Deflection Track

MaxTrak™ 2D
Slotted Deflection & Drift Track



Track that tames
the movers and shakers.



Stronger than steel.

We don't merely supply steel. It goes far beyond that. We supply strong, proactive solutions and forward-thinking ingenuity—anything it takes to make your job, and your life, easier.

Performance that stands up to deflection.

For superior head-of-wall vertical deflection, and the added benefit of horizontal drift movement, ClarkWestern introduces two solutions—MaxTrak™ Slotted Deflection Track and MaxTrak 2D Slotted Deflection & Drift Track. The MaxTrak System allows the top of the wall stud to float within the track legs. This connection allows for vertical live load movement of the primary structure without transferring axial loads to the wall studs. In addition, MaxTrak 2D also has slots in the web to allow for horizontal drift when seismic designs are required.



MaxTrak Slotted Deflection Track has slots in the legs to allow for vertical deflection.



MaxTrak 2D Slotted Deflection & Drift Track has slots in the legs and in the web to allow for deflection and drift.

Construction advantages:

- Provides positive attachment to wall framing for overall wall strength with no additional components
- Total allowable vertical (deflection) movement of 1-1/2" ($3/4'' \pm$)
- Total allowable horizontal (drift) movement of 4" ($2'' \pm$) (MaxTrak 2D only)
- One-piece system reduces the cost of materials and labor
- Easy installation reduces labor costs
- Fire-rated system integrates with a variety of UL® head-of-wall fire stop systems
- Can be used for both interior non-load bearing walls and exterior curtain wall systems
- Guideline at center of vertical deflection slot helps installers correctly position fasteners accurately and quickly

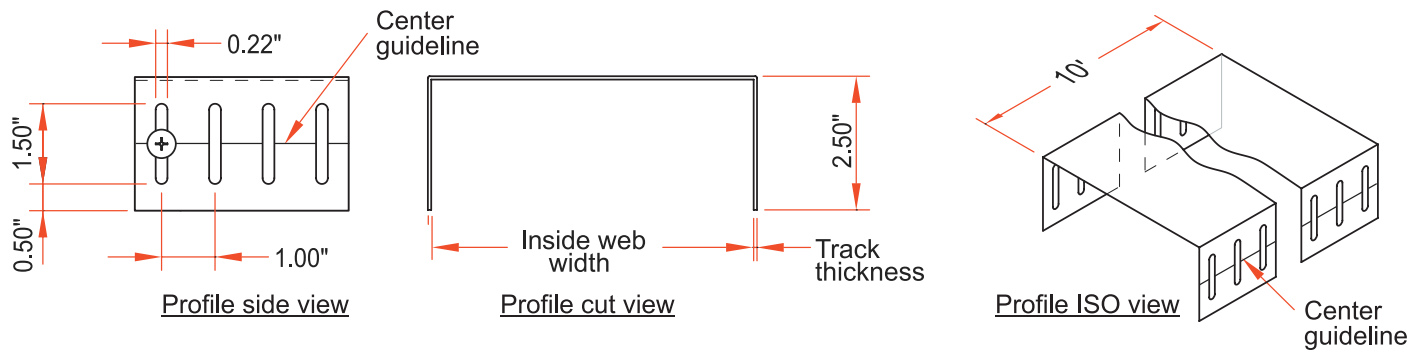
Technical support:

Technical support on this product is available by contacting ClarkWestern Technical Support at 888-437-3244 or visit clarkwestern.com for more detailed information.



MaxTrak™ profile information:

- Web widths: 2-1/2", 3-5/8", 4", 6" and 8"
- Leg length: 2-1/2"
- Material
 - 33mils (20ga) 33ksi
 - 43mils (18ga) 33ksi
 - 54mils (16ga) 50ksi
 - 68mils (14ga) 50ksi
 - All material G60 (G90 available)

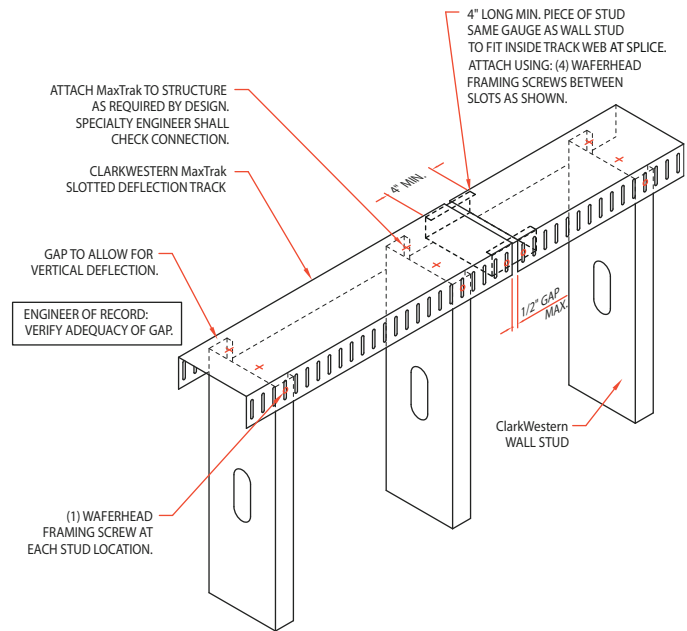
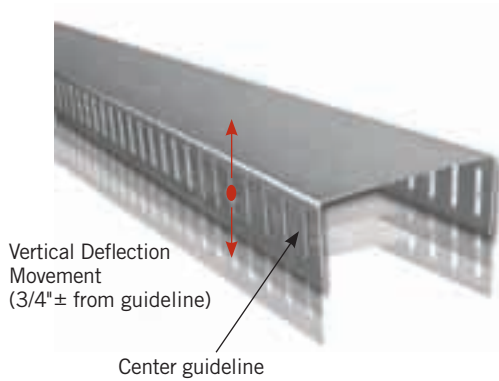


MaxTrak (SLT) and MaxTrak 2D (SLT/H) section properties:

Section designation SLT or SLT/H	Design thickness (in)	Minimum thickness (in)	Nominal thickness (mil/ga)	Gross								Effective					
				Yield strength Fy (ksi)	Weight (lb/ft)	Unpunched area (in ²)	Ix (in ⁴)	Rx (in)	Iy (in ⁴)	Ry (in)	Ixe (in ⁴)	Sxe(t) (in ³)	Sxe(b) (in ³)	Iye (in ⁴ x 10 ³)	Sye(l) (in ³)	Sye(r) (in ³)	
250SLT250-33	0.0346	0.0329	33mil/20ga	33	0.544	0.259	0.339	1.144	0.178	0.827	0.129	0.087	0.111	0.206	0.025	0.0009	
250SLT250-43	0.0451	0.0428	43mil/18ga	33	0.711	0.338	0.443	1.146	0.230	0.826	0.168	0.113	0.144	0.262	0.030	0.0011	
250SLT250-54	0.0566	0.0538	54mil/16ga	50	0.891	0.424	0.565	1.155	0.287	0.824	0.213	0.141	0.180	0.319	0.035	0.0013	
250SLT250-68	0.0713	0.0677	68mil/14ga	50	1.122	0.534	0.728	1.168	0.360	0.821	0.273	0.177	0.226	0.387	0.040	0.0016	
362SLT250-33	0.0346	0.0329	33mil/20ga	33	0.677	0.298	0.740	1.575	0.200	0.820	0.312	0.151	0.183	0.220	0.032	0.0009	
362SLT250-43	0.0451	0.0428	43mil/18ga	33	0.884	0.389	0.966	1.577	0.260	0.818	0.406	0.196	0.237	0.279	0.039	0.0012	
362SLT250-54	0.0566	0.0538	54mil/16ga	50	1.106	0.487	1.224	1.585	0.324	0.816	0.512	0.244	0.297	0.340	0.044	0.0014	
362SLT250-68	0.0713	0.0677	68mil/14ga	50	1.394	0.614	1.565	1.597	0.406	0.813	0.651	0.306	0.371	0.415	0.050	0.0017	
400SLT250-33	0.0346	0.0329	33mil/20ga	33	0.721	0.311	0.914	1.714	0.207	0.815	0.396	0.175	0.210	0.223	0.035	0.0009	
400SLT250-43	0.0451	0.0428	43mil/18ga	33	0.939	0.405	1.193	1.715	0.268	0.813	0.516	0.227	0.272	0.283	0.041	0.0012	
400SLT250-54	0.0566	0.0538	54mil/16ga	50	1.180	0.509	1.511	1.723	0.335	0.811	0.650	0.284	0.340	0.346	0.047	0.0014	
400SLT250-68	0.0713	0.0677	68mil/14ga	50	1.486	0.641	1.928	1.735	0.418	0.808	0.825	0.356	0.427	0.421	0.053	0.0017	
600SLT250-33	0.0346	0.0329	33mil/20ga	33	0.956	0.380	2.236	2.424	0.233	0.783	1.022	0.299	0.375	0.230	0.046	0.0010	
600SLT250-43	0.0451	0.0428	43mil/18ga	33	1.248	0.496	2.916	2.425	0.303	0.781	1.425	0.434	0.496	0.300	0.054	0.0012	
600SLT250-54	0.0566	0.0538	54mil/16ga	50	1.565	0.622	3.678	2.432	0.377	0.779	1.793	0.543	0.620	0.360	0.061	0.0015	
600SLT250-68	0.0713	0.0677	68mil/14ga	50	1.969	0.783	4.670	2.442	0.472	0.776	2.267	0.680	0.777	0.450	0.067	0.0018	
800SLT250-33	0.0346	0.0329	33mil/20ga	33	3.460	1.116	6.767	2.462	0.662	0.770	1.869	0.384	0.570	0.240	0.056	0.0010	
800SLT250-43	0.0451	0.0428	43mil/18ga	33	1.554	0.586	5.629	3.100	0.326	0.746	2.782	0.618	0.760	0.310	0.064	0.0013	
800SLT250-54	0.0566	0.0538	54mil/16ga	50	1.949	0.735	7.090	3.106	0.407	0.744	3.548	0.792	0.955	0.380	0.071	0.0015	
800SLT250-68	0.0713	0.0677	68mil/14ga	50	2.456	0.926	8.978	3.114	0.509	0.741	4.775	1.100	1.221	0.460	0.077	0.0019	

MaxTrak™ Slotted Deflection Track.

MaxTrak (SLT) is a head-of-wall deflection track that is used for framing exterior curtain walls and non-load bearing interior walls where vertical deflection occurs—and serves as a connecting member that isolates the cold-formed steel framing system from the movement of the primary structure. The slots in the leg are designed for a total allowable vertical movement of 1-1/2" (3/4"±).



1 SLOTTED DEFLECTION TRACK DETAIL

MaxTrak WITH TRACK SPLICE

Details shown in this brochure are for examples only. The engineer of record of the project is responsible for the design of the connection to the structure. Additional connection details can be found at clarkwestern.com.

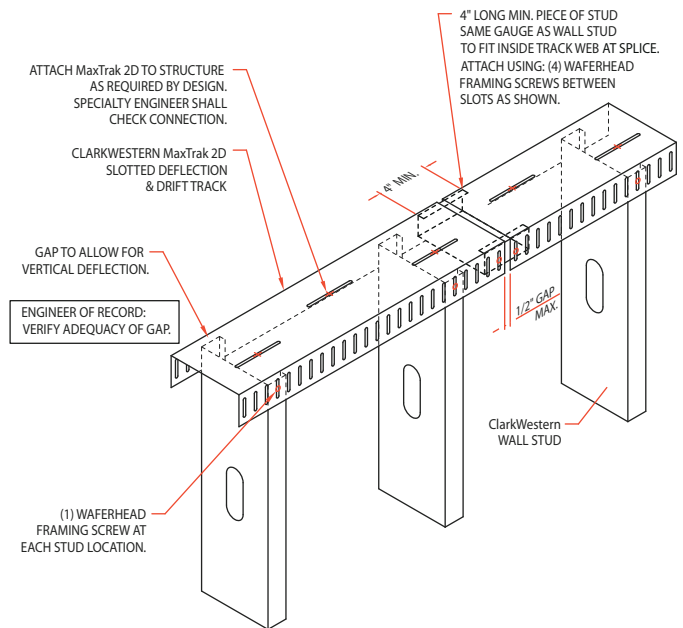
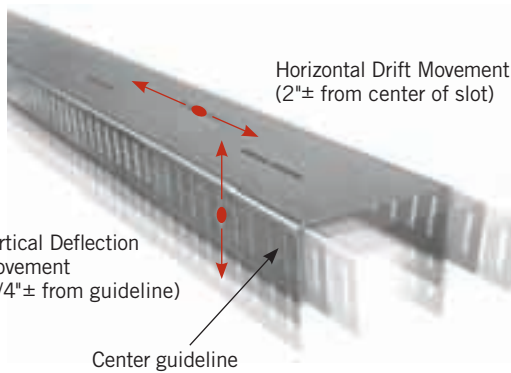
Ordering information:

MaxTrak Slotted Deflection Track

Part number	Description	Web width	Leg length	Mils	Gauge	KSI	Coating	Weight (lb/ft)	Standard length (ft)	Pieces/Skid
75024	250SLT250-33	2-1/2"	2-1/2"	33	20	33	G60	.83	10	112
75025	250SLT250-43	2-1/2"	2-1/2"	43	18	33	G60	1.08	10	112
75026	250SLT250-54	2-1/2"	2-1/2"	54	16	50	G60	1.35	10	112
75027	250SLT250-68	2-1/2"	2-1/2"	68	14	50	G60	1.70	10	112
75034	362SLT250-33	3-5/8"	2-1/2"	33	20	33	G60	.95	10	160
75035	362SLT250-43	3-5/8"	2-1/2"	43	18	33	G60	1.24	10	160
75036	362SLT250-54	3-5/8"	2-1/2"	54	16	50	G60	1.56	10	160
75037	362SLT250-68	3-5/8"	2-1/2"	68	14	50	G60	1.95	10	160
75044	400SLT250-33	4"	2-1/2"	33	20	33	G60	1.00	10	144
75045	400SLT250-43	4"	2-1/2"	43	18	33	G60	1.30	10	144
75046	400SLT250-54	4"	2-1/2"	54	16	50	G60	1.62	10	144
75047	400SLT250-68	4"	2-1/2"	68	14	50	G60	2.04	10	144
75064	600SLT250-33	6"	2-1/2"	33	20	33	G60	1.22	10	96
75065	600SLT250-43	6"	2-1/2"	43	18	33	G60	1.59	10	96
75066	600SLT250-54	6"	2-1/2"	54	16	50	G60	1.99	10	96
75067	600SLT250-68	6"	2-1/2"	68	14	50	G60	2.50	10	96
75084	800SLT250-33	8"	2-1/2"	33	20	33	G60	1.44	10	80
75085	800SLT250-43	8"	2-1/2"	43	18	33	G60	1.88	10	80
75086	800SLT250-54	8"	2-1/2"	54	16	50	G60	2.36	10	80
75087	800SLT250-68	8"	2-1/2"	68	14	50	G60	2.97	10	80

MaxTrak™ 2D Slotted Deflection & Drift Track.

MaxTrak 2D (SLT/H) is a head-of-wall deflection track that is used for framing exterior curtain walls and non-load bearing interior walls where vertical deflection and horizontal drift occurs—and serves as a connecting member that isolates the cold-formed steel framing system from the movement of the primary structure. The slots in the leg are designed for a total allowable vertical movement of 1-1/2" (3/4"±). The slots in the web, used for seismic design, are 4" long and spaced at 8" on center, staggered along the length of the member. The slots in the web are designed for a total horizontal (drift) movement of 4" (2"±).



2 SLOTTED DEFLECTION & DRIFT TRACK DETAIL MaxTrak 2D WITH TRACK SPLICE

Details shown in this brochure are for examples only. The engineer of record of the project is responsible for the design of the connection to the structure. Additional connection details can be found at clarkwestern.com.

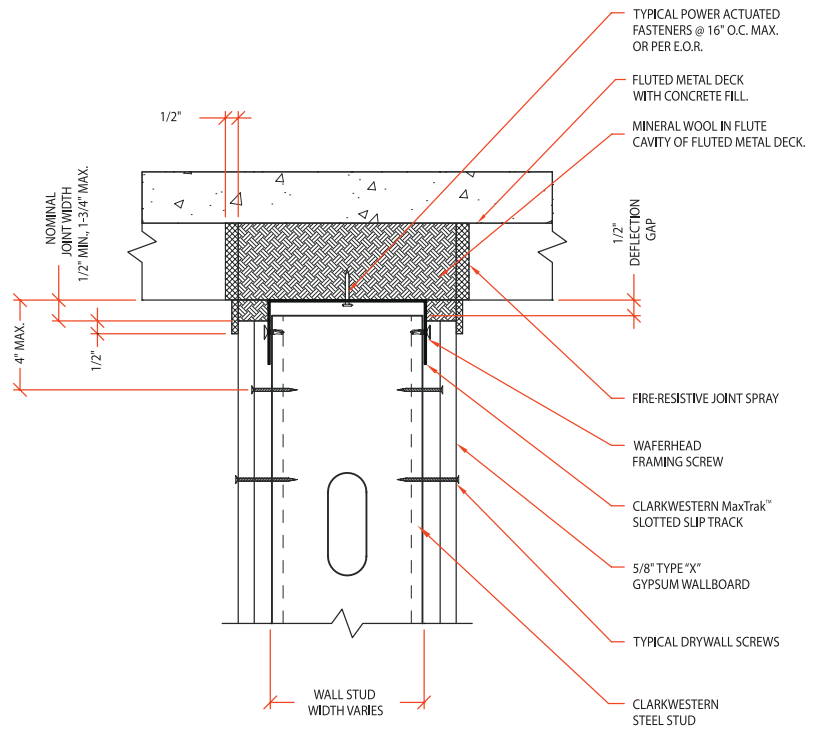
Ordering information:

MaxTrak 2D Slotted Deflection & Drift Track

Part number	Description	Web width	Leg length	Mils	Gauge	KSI	Coating	Weight (lb/ft)	Standard length (ft)	Pieces/Skid
75124	250SLT/H250-33	2-1/2"	2-1/2"	33	20	33	G60	.83	10	112
75125	250SLT/H250-43	2-1/2"	2-1/2"	43	18	33	G60	1.08	10	112
75126	250SLT/H250-54	2-1/2"	2-1/2"	54	16	50	G60	1.35	10	112
75127	250SLT/H250-68	2-1/2"	2-1/2"	68	14	50	G60	1.70	10	112
75134	362SLT/H250-33	3-5/8"	2-1/2"	33	20	33	G60	.95	10	160
75135	362SLT/H250-43	3-5/8"	2-1/2"	43	18	33	G60	1.24	10	160
75136	362SLT/H250-54	3-5/8"	2-1/2"	54	16	50	G60	1.56	10	160
75137	362SLT/H250-68	3-5/8"	2-1/2"	68	14	50	G60	1.95	10	160
75144	400SLT/H250-33	4"	2-1/2"	33	20	33	G60	1.00	10	144
75145	400SLT/H250-43	4"	2-1/2"	43	18	33	G60	1.30	10	144
75146	400SLT/H250-54	4"	2-1/2"	54	16	50	G60	1.62	10	144
75147	400SLT/H250-68	4"	2-1/2"	68	14	50	G60	2.04	10	144
75164	600SLT/H250-33	6"	2-1/2"	33	20	33	G60	1.22	10	96
75165	600SLT/H250-43	6"	2-1/2"	43	18	33	G60	1.59	10	96
75166	600SLT/H250-54	6"	2-1/2"	54	16	50	G60	1.99	10	96
75167	600SLT/H250-68	6"	2-1/2"	68	14	50	G60	2.50	10	96
75184	800SLT/H250-33	8"	2-1/2"	33	20	33	G60	1.44	10	80
75185	800SLT/H250-43	8"	2-1/2"	43	18	33	G60	1.88	10	80
75186	800SLT/H250-54	8"	2-1/2"	54	16	50	G60	2.36	10	80
75187	800SLT/H250-68	8"	2-1/2"	68	14	50	G60	2.97	10	80

MaxTrak™ UL® fire-rated information.

Meeting deflection and drift requirements are only part of the strengths of MaxTrak. When it comes to meeting fire-rated systems, MaxTrak is UL® approved for the most common UL® design assemblies and a variety of head-of-wall fire stop systems. All fire-rated assemblies comply to UL 2079 test standards.



Example UL fire-rated design detail
Head of wall perpendicular to deck flutes

MaxTrak and MaxTrak 2D UL® fire-rated approvals:

UL Approved Systems - Listing Partner and Design Number

UL Control 42XE - 1- and 2-Hour Designs, UL-2079 Test Standard Compliant

System 7 - STI

HW-D-0003	HW-D-0034	HW-D-0043	HW-D-0044	HW-D-0054	HW-D-0088	HW-D-0099
HW-D-0102	HW-D-0103	HW-D-0136	HW-D-0137	HW-D-0152	HW-D-0194	HW-D-0210
HW-D-0241	HW-D-0242	HW-D-0243	HW-D-0252	HW-D-0260	HW-D-0365	HW-D-0456
HW-D-0483	HW-D-0484	HW-D-0485	HW-D-0486	HW-D-0548	HW-D-0549	

System 8 - PFPP

HW-D-0024	HW-D-0025	HW-D-0036	HW-D-0062	HW-D-0063	HW-D-0071	HW-D-0072
HW-D-0073	HW-D-0162	HW-D-0185	HW-D-0263	HW-D-0272	HW-D-0278	

System 9 - 3M

HW-D-0020	HW-D-0021	HW-D-0029	HW-D-0031	HW-D-0101	HW-D-0111	HW-D-0134
HW-D-0517						

System 10 - HILTI

HW-D-0042	HW-D-0045	HW-D-0046	HW-D-0049	HW-D-0076	HW-D-0077	HW-D-0082
HW-D-0083	HW-D-0084	HW-D-0085	HW-D-0087	HW-D-0089	HW-D-0106	HW-D-0154
HW-D-0184	HW-D-0190	HW-D-0218	HW-D-0259	HW-D-0264	HW-D-0313	HW-D-0322
HW-D-0541	HW-D-0542					

System 13 - GRACE - Flamesafe

HW-D-0107	HW-D-0108
-----------	-----------

System 16 - John Wagner Assoc.

HW-D-0532

Additional MaxTrak UL® system tests are being conducted. Contact ClarkWestern Technical Support at 888-437-3244 for questions about other UL® rated systems. MaxTrak UL® fire resistance directory and system details are available at clarkwestern.com.

MaxTrak selection guide:

Based on your projects wall framing condition:

1. Select framing condition: Field framing or End of track location.
2. Select Interior framing or Exterior framing.
3. Select lateral load (wind pressure psf).
4. Select wall stud spacing.
5. Match MaxTrak thickness to meet wall height limit.

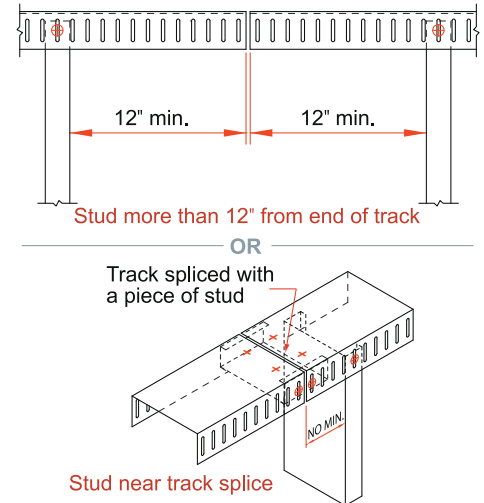
Framing Condition #1: Field framing

(single stud more than 12" from end of track or single stud near track splice)

Interior framing — Maximum wall heights									
Section thickness	5 psf			10 psf			15 psf		
	12" o.c.	16" o.c.	24" o.c.	12" o.c.	16" o.c.	24" o.c.	12" o.c.	16" o.c.	24" o.c.
33mil (20ga)	50'-0"	46'-9"	31'-2"	31'-2"	23'-4"	15'-7"	20'-9"	15'-7"	10'-4"
43mil (18ga)	50'-0"	50'-0"	41'-0"	41'-0"	30'-9"	20'-6"	27'-3"	20'-6"	13'-7"
54mil (16ga)	50'-0"	50'-0"	50'-0"	50'-0"	50'-0"	36'-0"	48'-0"	36'-0"	24'-0"
68mil (14ga)	50'-0"	50'-0"	50'-0"	50'-0"	50'-0"	50'-0"	50'-0"	50'-0"	35'-9"

Exterior framing — Maximum wall heights									
Section thickness	20 psf			25 psf			30 psf		
	12" o.c.	16" o.c.	24" o.c.	12" o.c.	16" o.c.	24" o.c.	12" o.c.	16" o.c.	24" o.c.
33mil (20ga)	15'-7"	11'-8"	—	12'-5"	9'-4"	—	10'-4"	—	—
43mil (18ga)	20'-6"	15'-4"	10'-3"	16'-4"	12'-3"	8'-2"	13'-7"	10'-3"	—
54mil (16ga)	36'-0"	27'-0"	18'-0"	28'-9"	21'-7"	14'-4"	24'-0"	18'-0"	12'-0"
68mil (14ga)	53'-8"	40'-3"	26'-10"	42'-11"	32'-2"	21'-5"	35'-9"	26'-10"	17'-10"

Framing Condition #1:



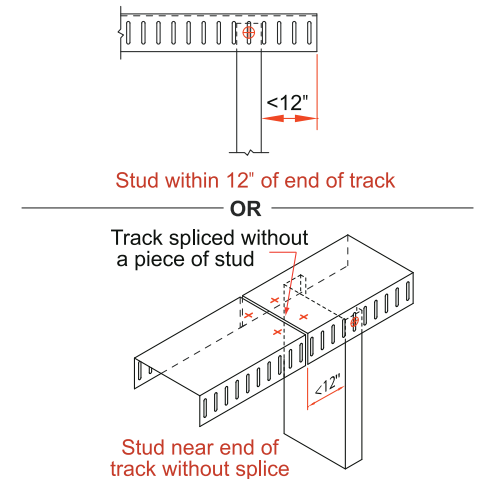
Framing Condition #2: End of track location

(single stud within 12" of end of track or track without track splice)

Interior framing — Maximum wall heights									
Section thickness	5 psf			10 psf			15 psf		
	12" o.c.	16" o.c.	24" o.c.	12" o.c.	16" o.c.	24" o.c.	12" o.c.	16" o.c.	24" o.c.
33mil (20ga)	40'-0"	30'-0"	20'-0"	20'-0"	15'-0"	10'-0"	13'-4"	10'-0"	—
43mil (18ga)	50'-0"	39'-10"	26'-7"	26'-7"	19'-11"	13'-3"	17'-8"	13'-3"	8'-10"
54mil (16ga)	50'-0"	50'-0"	47'-4"	47'-4"	35'-6"	23'-8"	31'-7"	23'-8"	15'-9"
68mil (14ga)	50'-0"	50'-0"	50'-0"	50'-0"	50'-0"	35'-6"	47'-4"	35'-6"	23'-8"

Exterior framing — Maximum wall heights									
Section thickness	20 psf			25 psf			30 psf		
	12" o.c.	16" o.c.	24" o.c.	12" o.c.	16" o.c.	24" o.c.	12" o.c.	16" o.c.	24" o.c.
33mil (20ga)	10'-0"	—	—	8'-0"	—	—	—	—	—
43mil (18ga)	13'-3"	9'-11"	—	10'-7"	—	—	8'-10"	—	—
54mil (16ga)	23'-8"	17'-9"	11'-10"	18'-11"	14'-2"	9'-5"	15'-9"	11'-10"	—
68mil (14ga)	35'-6"	26'-7"	17'-9"	28'-4"	21'-3"	14'-2"	23'-8"	17'-9"	11'-10"

Framing Condition #2:



*For conditions where the stud thickness is less than the MaxTrak system, stud web crippling and screw pullout must be checked. Additional charts with these conditions are available at clarkwestern.com.

Table notes:

1. The minimum wall stud thickness must be equal to the selected slotted track thickness.
2. Screws must be located 1-1/4" from the track web.
3. #8 minimum wafer head screws shall be used for 33 mil material sections.
4. #10 minimum wafer head screws shall be used for 43 mil and thicker sections.
5. 33 & 43 mil material shall have a yield strength equal or greater than 33 ksi.
6. 54 & 68 mil material shall have a yield strength equal or greater than 50 ksi.
7. The values in these tables apply to the depths of members shown in the section properties table.
8. Wall heights for interior framing are limited to 50'-0".
9. The values are based on a single stud for worst case. Multiple studs are acceptable.
10. Span = [2 x Allowable Load] / [Pressure(psf) x Stud Spacing(ft)]

Allowable lateral loads		
Section thickness	Framing location	
	Framing condition #1	Framing condition #2
33mil (20ga)	156 lbs.	100 lbs.
43mil (18ga)	205 lbs.	133 lbs.
54mil (16ga)	360 lbs.	237 lbs.
68mil (14ga)	537 lbs.	355 lbs.

MaxTrak™ code approvals and performance standards:

ClarkWestern™ MaxTrak™ slotted deflection track and MaxTrak™ 2D slotted deflection and drift track systems meet or exceed these applicable performance standards.

AISI “North American specification for the design of cold-formed steel structural members, 2001 w/ 2004 supplement”

ASTM American Society for Testing and Materials

- A653 “Standard Specification for Steel Sheet, Zinc-Coated (Galvanized) or Zinc-Iron Alloy-Coated (Galvannealed) by the Hot-Dip Process”
- A924 “Standard Specification for General Requirements for Steel Sheet, Metallic-Coated by the Hot-Dip Process”
- A1003 “Standard Specification for Steel Sheet, Carbon, Metallic- and Nonmetallic Coated for Cold-Formed Framing Members”
- C645 “Standard Specification for Nonstructural Steel Framing Members”
- C754 “Standard Specification for Installation of Steel Framing Members to Receive Screw-Attached Gypsum Panel Products”
- C955 “Standard Specification for Load-Bearing (Transverse and Axial) Steel Studs, Runners (Tracks), and Bracing or Bridging for Screw Application of Gypsum Panel Products and Metal Plaster Bases”
- C1002 “Standard Specification for Steel Self-Piercing Tapping Screws for the Application of Gypsum Panel Products or Metal Plaster Bases to Wood Studs or Steel Studs”
- C1007 “Standard Specification for Installation of Load-Bearing (Transverse and Axial) Steel Studs and Related Accessories”
- E119 “Standard Test Methods for Fire Tests of Building Construction and Materials”
- E814 “Standard Test Method for Fire Tests of Through-Penetration Fire Stops”
- E1966 “Standard Test Method for Fire-Resistive Joint Systems”

UL® Underwriters Laboratories Testing Standard

UL 2079 “Tests for Fire Resistance of Building Joint Systems”**, file number XHLI.R26034

SSMA Steel Stud Manufacturers Association

ClarkWestern Building Systems meets or exceeds all the requirements of ASTM and SSMA.

Additional code approvals

IBC International Building Code

Independent Product Certification IAPMO #0145

MaxTrak and MaxTrak 2D load testing by STAR (Structural Testing and Research Inc.)

Technical support

Technical support is available by contacting ClarkWestern Design at 1-888-437-3244.

**UL® and UL® Design are service marks of Underwriters Laboratories, Inc.

Green benefits and recycled content:

LEED® Credit MR 2 Construction Waste Management — ClarkWestern products are manufactured from cold-formed steel. Steel is 100% recyclable, which helps divert debris from the waste stream. The contribution to LEED must be calculated by the contractor based on weight or volume.

LEED Credit MR 4 Recycled Content — LEED allows for steel products to use a default value of 25.5% post-consumer and 6.8% pre-consumer recycled content without additional documentation. If you wish to report a higher number for your project or seek Credit MR 5 regional materials, please contact Tech Support at 888-437-3244 or visit www.clarkwestern.com.

ClarkWestern Building Systems has prepared this literature with the utmost diligence and care for accuracy and conformance to standards.

ClarkWestern intends this information to be accurate, informative and helpful as a selection guide for choosing ClarkWestern Building System products. However, this information is only to be used for guidance and is not intended to replace the design, drawings, specifications and decisions of a professional architect or engineer.

ClarkWestern Building Systems or its affiliates shall not be responsible for incidental or consequential damages, directly or indirectly sustained, nor for loss caused by application of our products for other than their intended uses. Our liability is limited to replacement of defective products. Claims shall be deemed waived unless they are made to us in writing within thirty (30) days of the date a problem was or reasonably should have been discovered.

ClarkWestern Building Systems reserves the right to modify or change any information contained in this literature without notification.



USGBC and related logo is a trademark owned by the U.S. Green Building Council and is used by permission.

ClarkWestern Building Systems, Inc. plant locations:

CALIFORNIA - Riverside
Phone: 951-360-3500
Fax: 951-360-3131

CALIFORNIA - Woodland
Phone: 530-668-1987
Fax: 530-668-8408

CONNECTICUT - Bristol
Phone: 866-921-0023
Fax: 866-921-0027

FLORIDA - Dade City
Phone: 352-518-4400
Fax: 352-518-4450

GEORGIA - Pendergrass
Phone: 706-693-3010
Fax: 706-693-3048

ILLINOIS - Rochelle
Phone: 800-659-0745
Fax: 800-659-0840

MARYLAND - Baltimore
Phone: 410-477-4000
Fax: 410-477-1550

OHIO - Middletown
Phone: 513-539-2900
Fax: 513-539-2901

TEXAS - Dallas
Phone: 214-350-1716
Fax: 214-350-7252



ClarkWestern Design Services. A full spectrum of solutions.

CW DESIGN: EAST - Roswell, GA
Toll-Free Phone: 877-832-3206
Local Phone: 678-990-3540
Toll-Free Fax: 877-832-3208
Local Fax: 678-990-3542

CW DESIGN: NORTHEAST - Portland, ME
Toll-Free Phone: 877-832-3206
Toll-Free Fax: 877-832-3208

CW DESIGN: WEST - Riverside, CA
Toll-Free Phone: 877-832-3206
Toll-Free Fax: 877-832-3208

TECHNICAL SUPPORT:
Phone: 888-437-3244

